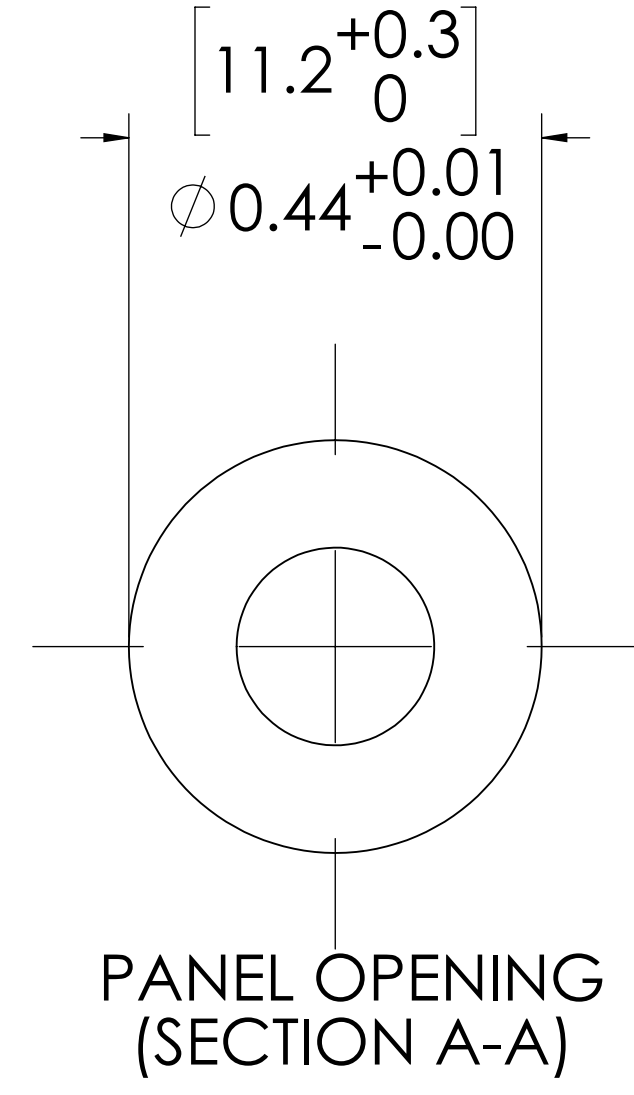
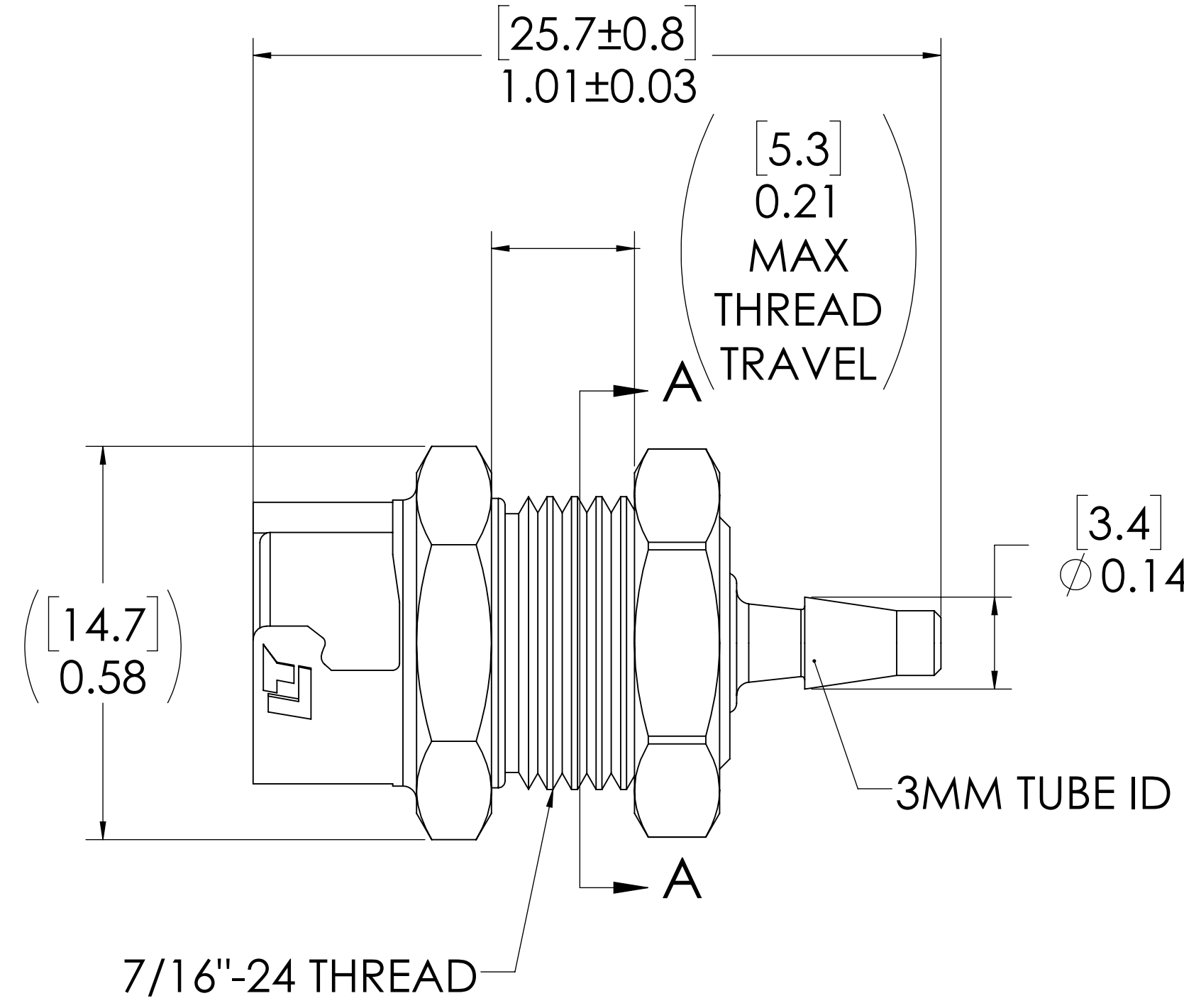
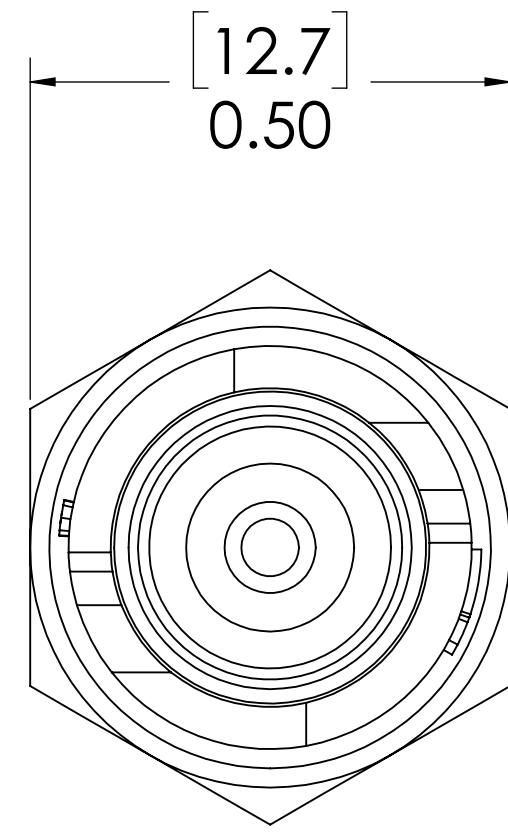
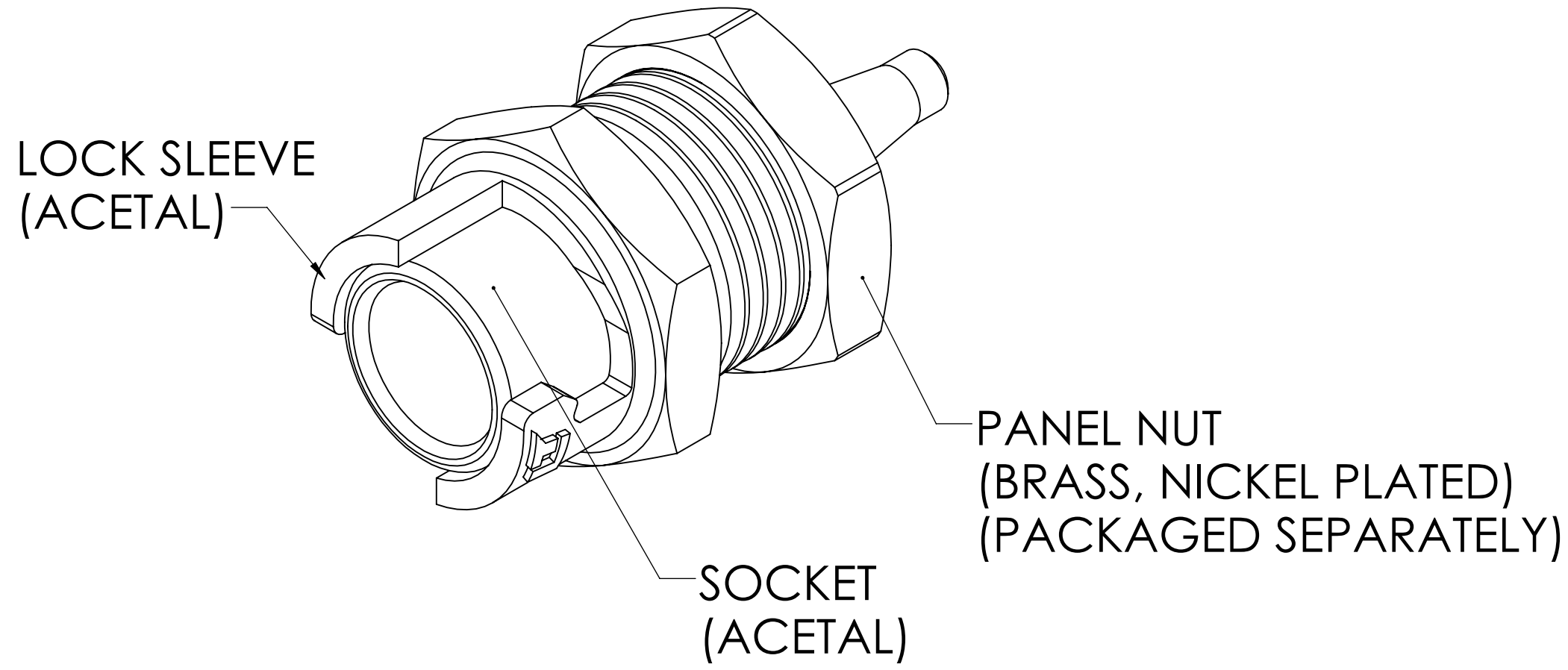


REVISIONS						
SHEET	ZONE	REV.	ECO	DESCRIPTION	DATE	APPROVED
1	ALL	NC	50142	INITIAL RELEASE	1/21/2015	HRC
1	ALL	A	50253	2017 FORMAT UPDATE	7/11/2017	HRC
1	ALL	B	50253(2)	UPDATE DWG TO CURRENT FORMAT, INSPECTION DRAWING & STANDARDS	5/7/2018	HRC



- NOTES:**
- MATERIAL: ACETAL
 - COLOR: NATURAL WHITE

FOR REFERENCE ONLY

<small>UNLESS OTHERWISE SPECIFIED: DIMENSIONS ARE IN INCHES TOLERANCES: FRACTIONAL ± 1/32 ANGULAR: MACH ± 0.5 BEND ± 2 ONE PLACE DECIMAL ± 0.1 TWO PLACE DECIMAL ± 0.01 THREE PLACE DECIMAL ± 0.005 TWO PLACE DECIMAL (mm) [± 0.12]</small>	DRAWN	HRC	1/19/15	
	CHECKED	HRC	1/19/15	
	ENG APPR.	HRC	5/7/18	
	MFG APPR.	BDB	5/7/18	
<small>PROPRIETARY AND CONFIDENTIAL THE INFORMATION CONTAINED IN THIS DRAWING IS THE SOLE PROPERTY OF LINKTECH LLC. ANY REPRODUCTION OR DISCLOSURE IN PART OR AS A WHOLE WITHOUT THE WRITTEN PERMISSION OF LINKTECH LLC IS STRICTLY PROHIBITED.</small>	PURCHASING	RK	5/7/18	PART NO: 10AC-S3-M3 DESCRIPTION: LinkTech 10AC Series Panel Mt. Female, Non-valved, 3mm HB
<small>SIZE DWG. NO. REV</small> C 10AC100062 B		<small>SCALE: NTS WEIGHT: SHEET 1 OF 1</small>		